



# CHEBROLU ENGINEERING COLLEGE

(Sponsored by Sri Visweswaraiah Educational Society)

Approved by AICTE, New Delhi & Affiliated to JNTU Kakinada.

CHEBROLU - 522212. Guntur Dist. Phone : 08644 - 215215, 9951222238

## 4.1.1 INFRASTRUCTURE AND PHYSICAL FACILITIES

### SUMMARY SHEET

### LIST OF ENCLOSURES

1. Infrastructure facilities
2. Physical facilities
3. Teaching and learning facilities
4. Classrooms facilities
5. Laboratories facilities
6. Computing equipment facilities
7. Additional information



  
Principal

PRINCIPAL  
CHEBROLU ENGINEERING COLLEGE  
CHEBROLU

# CHEBROLU ENGINEERING COLLEGE

Near substation, chebrolu.

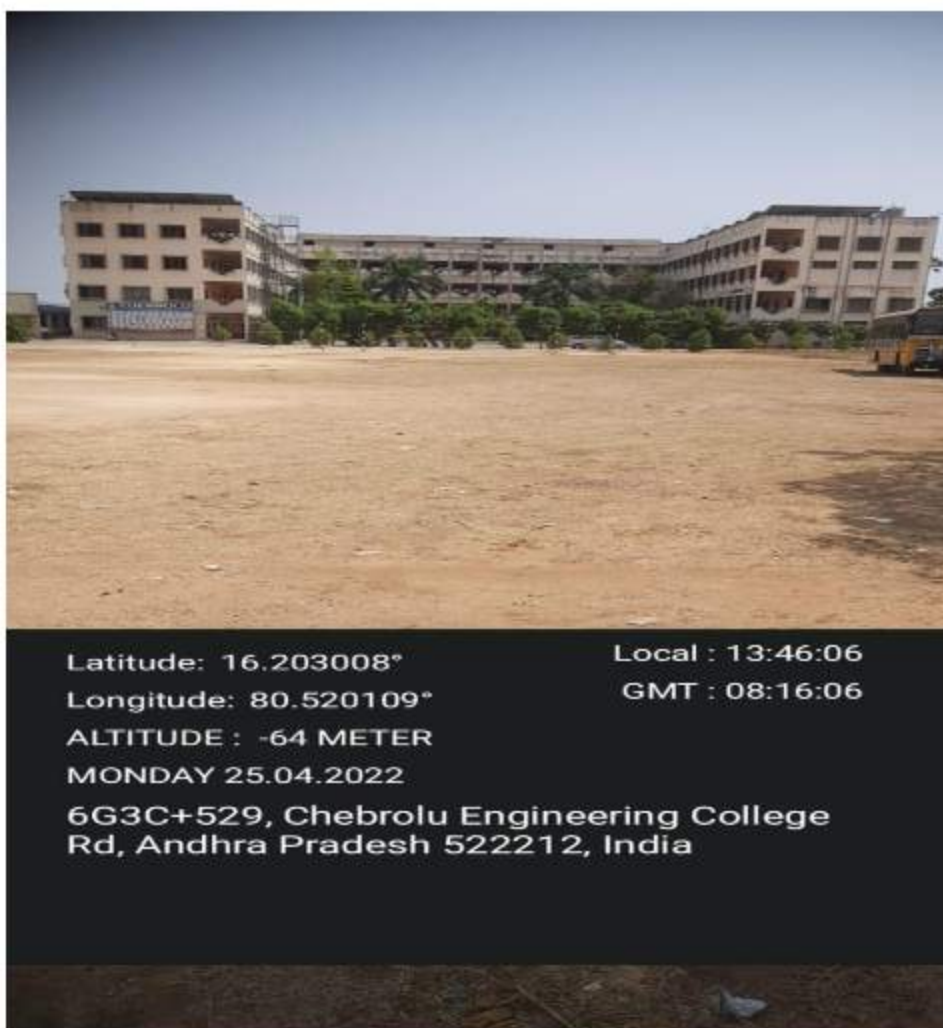
## Criterion 4 – Infrastructure and Learning Resources

### 4.1 Physical Facilities

4.1.1. The Institution has adequate infrastructure and physical facilities for teaching – learning. Viz., classrooms, laboratories, computing equipment etc.

## CAMPUS

The institute campus extends over an area of 10.16 acres of the land. The campus is divided into various functional zones, canteen and laboratories. In addition to lecture halls, seminar rooms and drawing halls, the college has an auditorium, library, computer centre, reading rooms, workshops and well equipped laboratories. The college has spacious playgrounds, tennis courts, and a healthcare center.



## POWER BACKUP

The institute has architecturally well designed and functionally spacious classrooms. The laboratories and workshops are fully equipped. The college is facilitated with KIRLOSKAR AC POWER GENERATOR 82.5 KVA (2nos) Capacity and POWERLINE UPS 10 KVA (1nos.), DELTA UPS 20 KVA (3nos.) VERITEC 20 UPS (1nos) systems are available to cater to the needs of laboratory to ensure uninterrupted power supply



Latitude: 16.202901°      Local: 16:31:20  
Longitude: 80.520717°      GMT: 11:01:20  
ALTITUDE: -66 METER  
MONDAY 25.04.2022  
6G3C+57X, Chebrolu Engineering College  
Rd, Andhra Pradesh 522212, India



Latitude: 16.202901°      Local: 16:31:13  
Longitude: 80.520717°      GMT: 11:01:13  
ALTITUDE: -66 METER  
MONDAY 25.04.2022  
6G3C+57X, Chebrolu Engineering College  
Rd, Andhra Pradesh 522212, India

Power Generator and components

## Class rooms

The institution has adequate infrastructure and physical facilities for teaching – learning, towards this our college has 32 classrooms, apart from this one principal room, one Board room, one office room, one department office, 7 Head of department rooms, 7 faculty rooms, 7 Central stores, one maintenance, one security, one housekeeping, one pantry, one examination control office, one placement office, 20 tutorials, 2 drawing halls, 2 computer labs, one seminar hall, 72 Laboratories, four workshops, one Library.



Latitude: 16.202925° Local: 13:30:24  
Longitude: 80.520481° GMT: 08:00:24  
ALTITUDE: -65 METER  
MONDAY 25.04.2022  
6G3C+667, Chebrolu Engineering College  
Rd, Andhra Pradesh 522212, India



Latitude: 16.202925° Local: 13:30:24  
Longitude: 80.520481° GMT: 08:00:24  
ALTITUDE: -65 METER  
MONDAY 25.04.2022  
6G3C+667, Chebrolu Engineering College  
Rd, Andhra Pradesh 522212, India

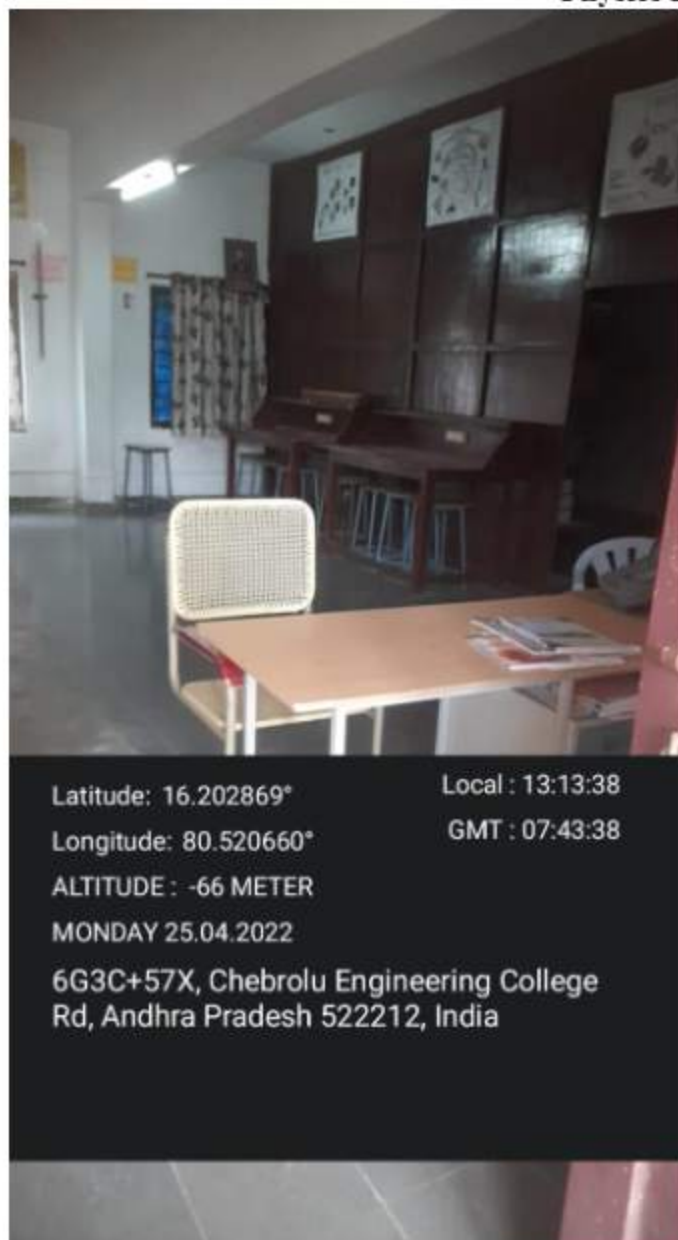
Class rooms



## Laboratories

The institution has adequate infrastructure and physical facilities for teaching – learning, towards this our college has 72 Laboratories from different Departments, apart from this 32 classrooms, one principal room, one Board room, one office room, one department office, 7 Head of department rooms, 7 faculty rooms, 7 Central stores, one maintenance, one security, one housekeeping, one pantry, one examination control office, one placement office, 20 tutorials, 2 drawing halls, 2 computer labs, one seminar hall, four workshops and one Library.

### Physics Lab



## Electrical Lab



Latitude: 16.202869°

Local : 13:14:20

Longitude: 80.520660°

GMT : 07:44:20

ALTITUDE : -66 METER

MONDAY 25.04.2022

6G3C+57X, Chebrolu Engineering College  
Rd, Andhra Pradesh 522212, India

## Computing equipment

The institution has adequate infrastructure and physical facilities for teaching – learning, towards this our college has 2 computer labs.

## COMPUTR LAB

Computer centre caters to the day-to-day needs of the students and faculty to keep abreast with the trends in engineering and technology. The college has **510** terminals with necessary accessories and peripherals which are supported by appropriate software

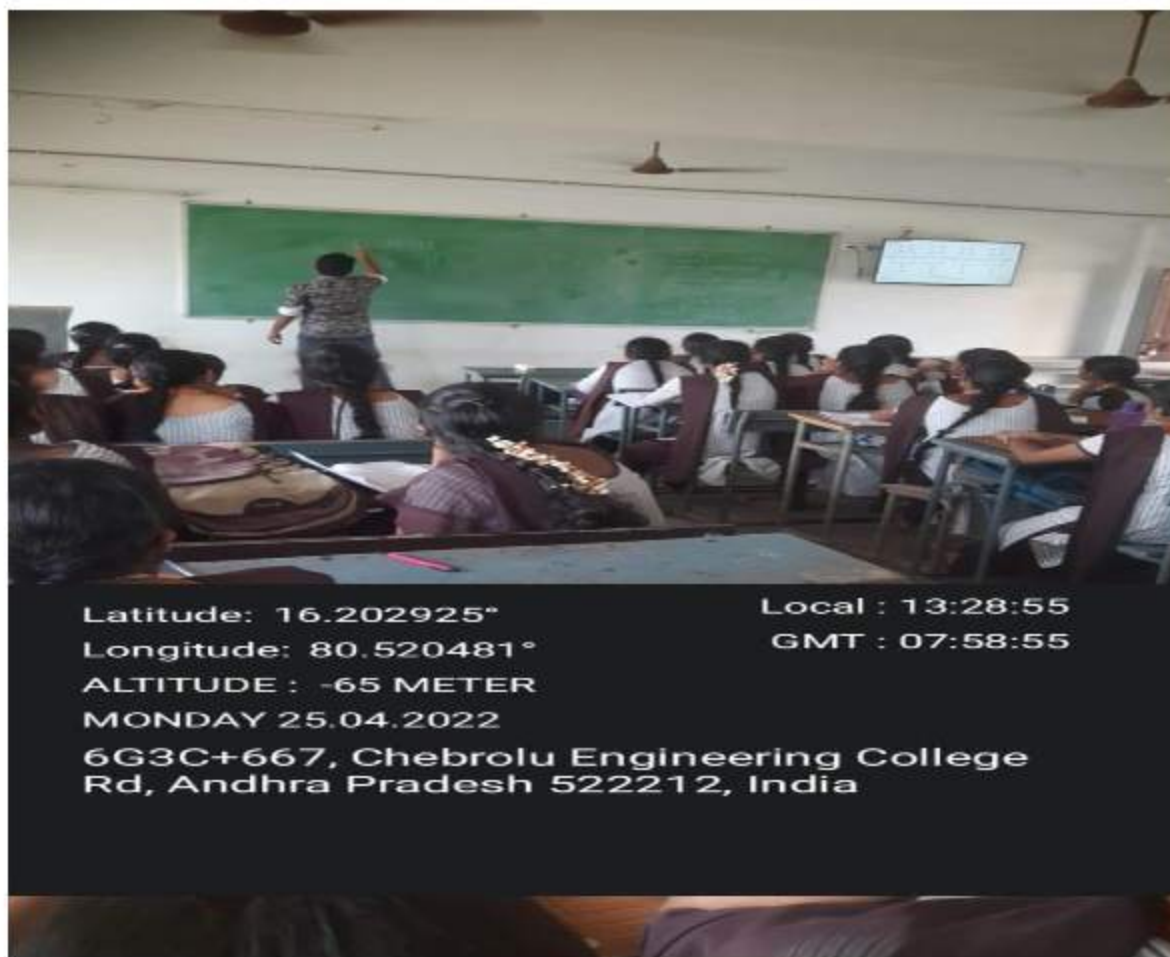


Computer Lab

The Institute is equipped with excellent computing facility and is networked through LAN. Internet facility with 100 MBPS bandwidth is available to all academic, Administrative units and Hostels.

## **E-CLASS ROOMS**

The Institute has one E - Class room equipped with LCD projector and computers with a seating capacity of 60. Video lectures, web-based learning and direct telecast through interactive learning are provided in the electronic classroom.





## Seminar Hall

The Institute has a seminar hall equipped with LCD projector and computers with a seating capacity of 200 people



Latitude: 16.202925°

Local : 13:32:06

Longitude: 80.520481°

GMT : 08:02:06

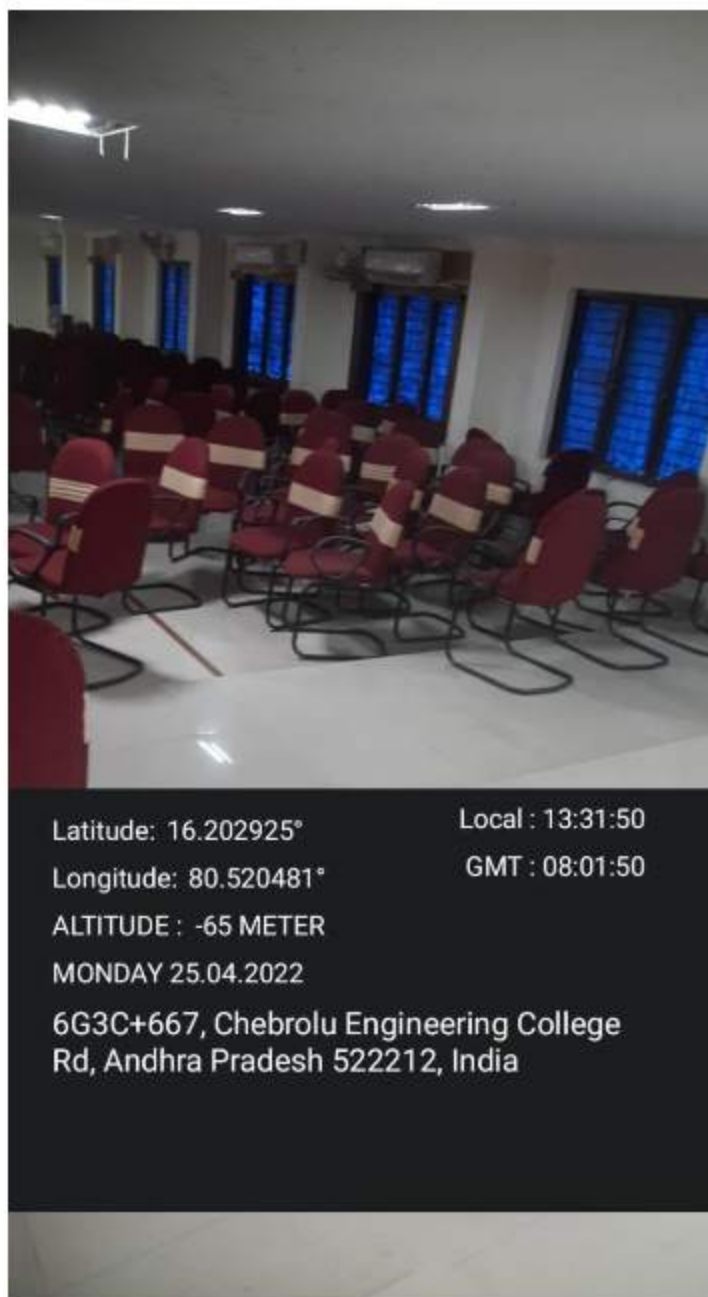
ALTITUDE : -65 METER

MONDAY 25.04.2022

6G3C+667, Chebrolu Engineering College  
Rd, Andhra Pradesh 522212, India

## Conference Hall and Auditorium

The institute has magnificent board room where important meetings are held. The college has auditorium with 200 seating capacities and Open Air Auditorium where in seminars, conferences and guest lecturers are conducted. The orientation programs, fresher's day, parents meet, cultural meets and annual day organized in open air auditorium.



Latitude: 16.202925°

Local : 13:31:50

Longitude: 80.520481°

GMT : 08:01:50

ALTITUDE : -65 METER

MONDAY 25.04.2022

6G3C+667, Chebrolu Engineering College  
Rd, Andhra Pradesh 522212, India

# English Language Communication Skills Laboratory

The English language communication skills laboratory facilitates the students to prepare for GRE, TOEFL and other competitive exams and helps students to improve their communication skills. Students admitted into of all branches have a compulsory course "English Language Communication Skills Lab".



Latitude: 16.202761°

Local : 16:13:37

Longitude: 80.520423°

GMT : 10:43:37

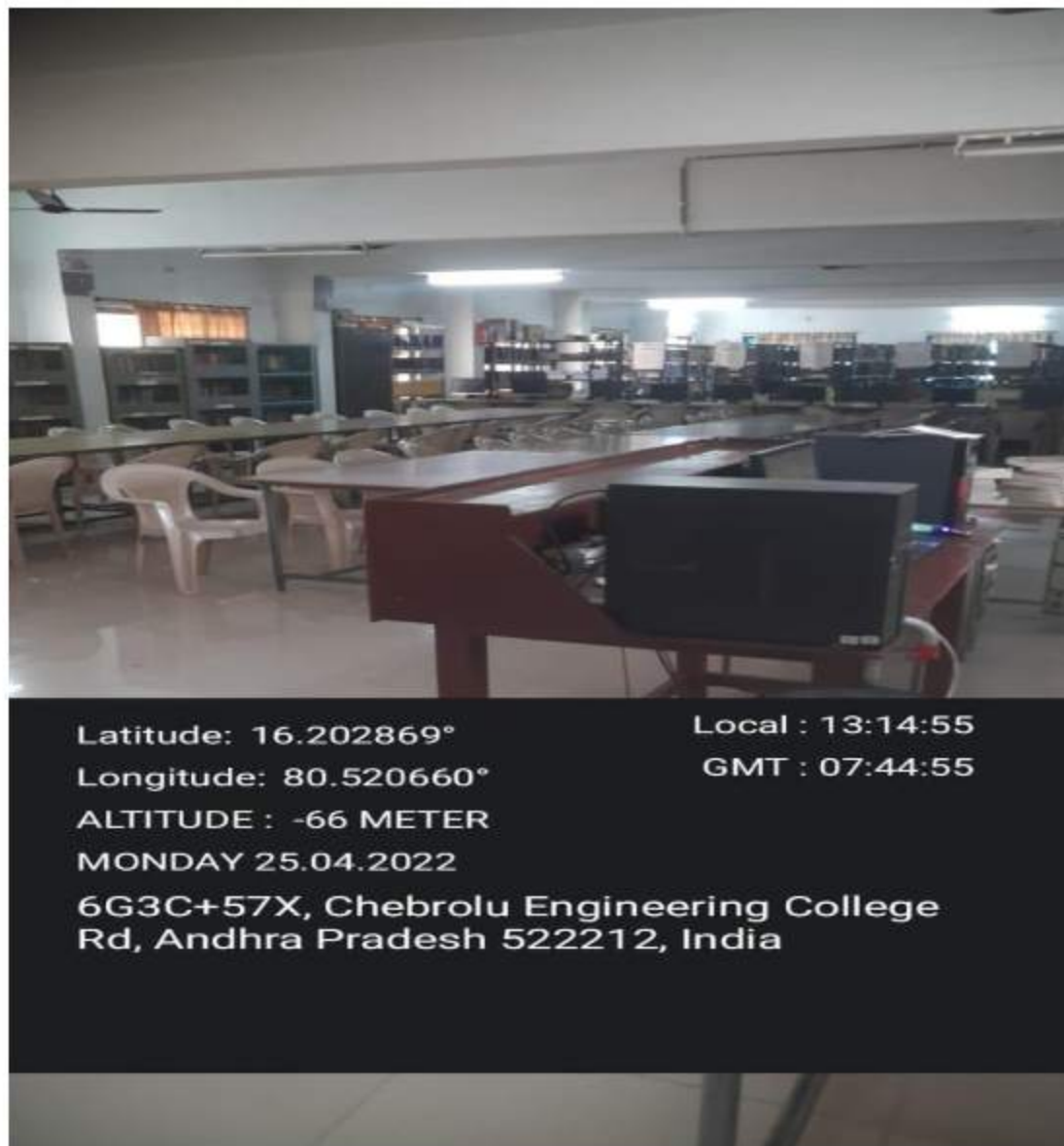
ALTITUDE : -65 METER

MONDAY 25.04.2022

6G3C+667, Chebrolu Engineering College  
Rd, Andhra Pradesh 522212, India

# Library

Library is also equipped with Internet facility. The college library being a member of the Developing Library Network (DELNET) has access to the vast resources of the latter. The college is equipped with NPTEL server and 1196 videos can access through NPTEL server.



Library



### Director Room

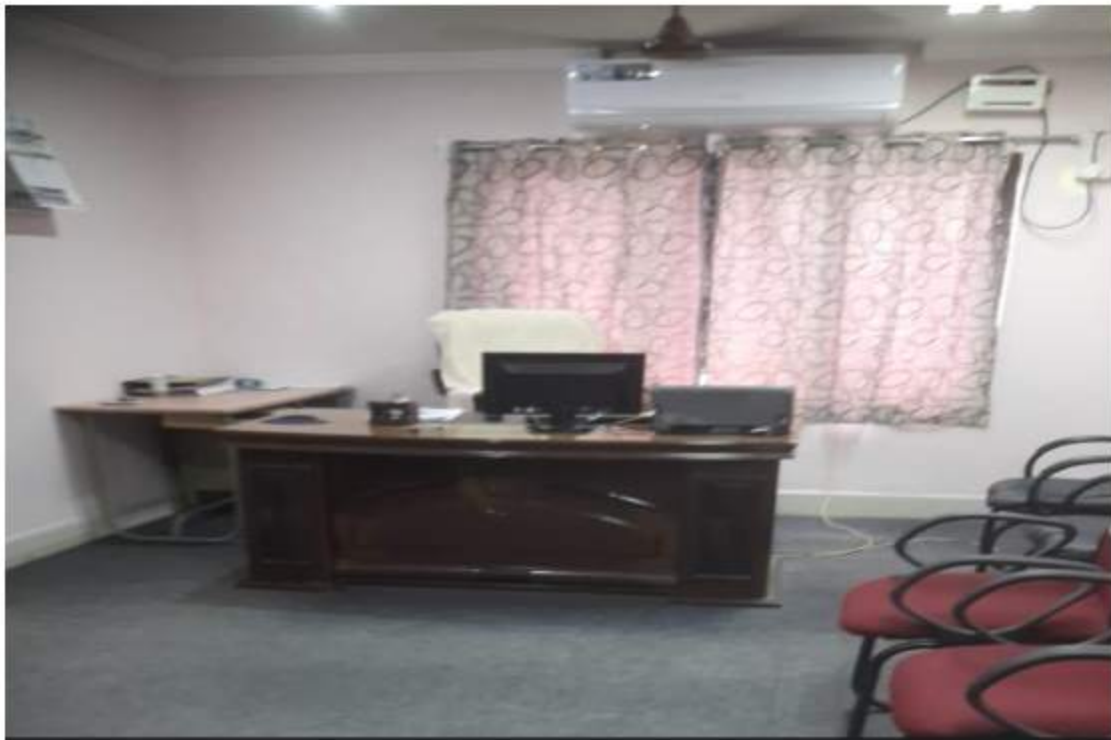


Latitude: 16.202869°  
Longitude: 80.520660°  
ALTITUDE : -66 METER  
MONDAY 25.04.2022

Local : 13:17:30  
GMT : 07:47:30

6G3C+57X, Chebrolu Engineering College  
Rd, Andhra Pradesh 522212, India

### Principal Room



Latitude: 16.202869°

Local : 13:17:41

Longitude: 80.520660°

GMT : 07:47:41

ALTITUDE : -66 METER

MONDAY 25.04.2022

6G3C+57X, Chebrolu Engineering College  
Rd, Andhra Pradesh 522212, India

MSME Room



Latitude: 16.202869°

Local : 13:19:33

Longitude: 80.520660°

GMT : 07:49:33

ALTITUDE : -66 METER

MONDAY 25.04.2022

6G3C+57X, Chebrolu Engineering College  
Rd, Andhra Pradesh 522212, India

## Office Section



Latitude: 16.202869°

Local : 13:12:31

Longitude: 80.520660°

GMT : 07:42:31

ALTITUDE : -66 METER

MONDAY 25.04.2022

6G3C+57X, Chebrolu Engineering College  
Rd, Andhra Pradesh 522212, India



## Exam Section



Latitude: 16.202869°

Local : 13:20:48

Longitude: 80.520660°

GMT : 07:50:48

ALTITUDE : -66 METER

MONDAY 25.04.2022

6G3C+57X, Chebrolu Engineering College  
Rd, Andhra Pradesh 522212, India

## Canteen



Latitude: 16.202869°

Local : 13:10:24

Longitude: 80.520660°

GMT : 07:40:24

ALTITUDE : -66 METER

MONDAY 25.04.2022

6G3C+57X, Chebrolu Engineering College  
Rd, Andhra Pradesh 522212, India

## Capitaria

